

NURSERY NEWSLETTER

Autumn Term 1 2020

Dear Parents/Carers,

Hello and welcome to Franciscan Nursery. Your class teachers this year are Mrs McDonald (**Apple Tree Class**) and Miss Lisa Ferguson (**Cherry Tree Class**). We have just started the process of settling the new children into the Nursery and we are excited to get to know them all!

Starting Nursery is a big step in a child's life and with your help we want this transition from home to school to be as smooth as possible. Please feel free to speak to a member of the Nursery team if you have any questions about your child's first weeks at school, we are happy to support you in any way that we can. We are looking forward to introducing the children to their new classrooms, learning areas and routines of the day and are excited to get our fantastic learning underway. Please try and talk to your child about what they have done at school each day so that they are able to share with you all of their new skills and learning.

Our topic this half term is '**All about me**'. Throughout this topic will be looking at the children's interests, name recognition, people in their family, photographs; old and new, body parts and the five senses.

We look forward to a wonderful year with you.

The Nursery Team

WHOLE SCHOOL DIARY DATES

September

WB 7th Secondary Transfer Power Point to be sent out
WB 14th Meet the Teacher video to be sent out

October

9th Harvest Assembly - Y1&2
WB 12th Parents Evening TBC
16th Diwali Assembly - Y3
23rd Inset Day - School Closed to pupils

26th - 30th Oct HALF TERM

November

2nd School open to pupils
WB 16th Anti-bullying Week

December

Christmas concerts dates TBC
18th End of term (own clothes day) 2pm finish

How you can help you child

1. Please make sure **ALL** items of clothing are clearly labelled, especially outdoor wear.
2. Please feel free to bring in wellington boots etc. for outdoor play. **N.B NO** umbrellas!
3. Please make sure your child wears suitable clothing (they will get paint/glue on them), so please no 'best' clothes.
4. Please bring spare clothes in a bag that can be left on your child's peg in the classroom. Please make sure that clothes are easy to put on and remove to ensure easy toileting e.g. trousers with elastic waistbands.
6. Please do not bring in bags or backpacks from home. You may wish to bring a water bottle for your child, if you wish to do so please make sure it is clearly labelled.
6. Please ask your child to leave their own toys at home as we cannot be responsible for these items.

Nursery Routine

Drop off and Pick up via Nursery Entrance

Full time children

Start time: 8.55 am End of day: 3.15 pm

Part time AM children

Start time: 8.55 am End of day: 11.55 am

Part time PM children

Start time: 12.15 pm End of day: 3.15pm

These times are subject to change

Meet the Nursery staff



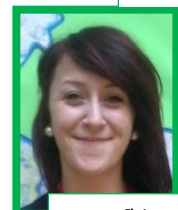
Miss Ferguson
EYFS Lead Teacher



Mrs McDonald
Class Teacher



Mrs Visa
Nursery Nurse



Claire
Teaching Assistant



Farhia
Teaching Assistant



Cheryl
Teaching Assistant